



West Pine Chalet

VAIL, COLORADO

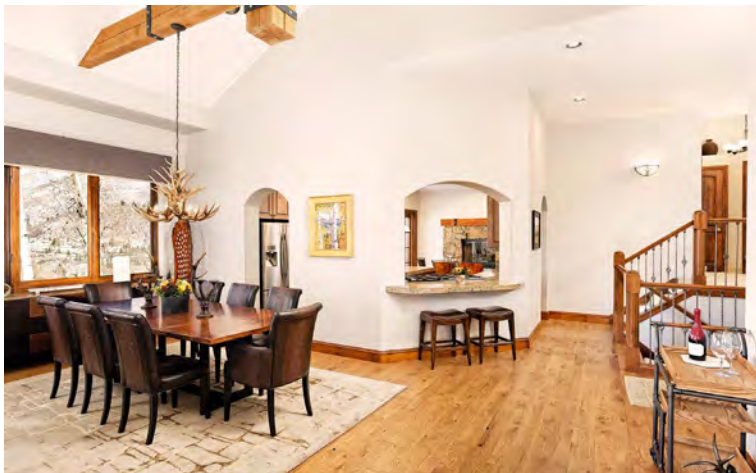
5 BEDROOM SUITES + 5 BATHROOMS



The Space

West Pine Chalet is a distinctive mix of classic Alpine architecture with design influences from the American Arts and Crafts movement. Natural oak plank flooring and rustic wooden ceiling beams with forged metal strapping create a natural frame for warm and inviting living, with colorful accents provided by sculptural antler chandeliers, tapestry pillows, fur throws, and patterned pile rugs shot through with metallic threads. The open field stone hearth topped by an oversized timber mantel brings a heritage feel to the live-in kitchen, with a passthrough window, creating a perfectly, cozy family retreat.





The Experience

When you reserve a villa, penthouse or chalet, you are reserving the highest quality private luxury properties in the world. Ultra-luxury collection of exclusively owned and managed luxury properties, along with its elevated and immersive travel experiences, has garnered a guest satisfaction rating of 4.98 out of 5 for over a decade. Each villa comes with a full suite of extraordinary amenities and benefits, including:

- arrival reception with hors d'oeuvres and refreshments
- Complimentary selection of premium wines and spirits
- Light pantry stocking
- Dedicated Vail concierge and experience team
- Daily housekeeping



The Amenities

The chalet's floor to ceiling windows showcase panoramas across the white barked Aspen tree foothills of Vail Mountain, with direct access to hiking and biking trails. In a short walk or ride, find yourself in Lionshead or Vail Village, iconic Alpine-style pedestrian neighborhoods, all without losing a local's sensibility. Back on your home turf, take advantage of indoor/outdoor living, whether lounging on the wooden wrap-around deck with ground level garden and hot tub, or escaping into the inner-sanctum den with supremely comfortable leather couches, top tech big screen TV, and fieldstone fireplace.

- PERSONAL CONCIERGE
- PRIVATE HOT TUB
- OUTDOOR PATIOS
- AL-FRESCO DINING AREA
- OUTDOOR SNOWMELT SYSTEM
- FULLY-EQUIPPED KITCHEN
- FIREPLACES
- LUXURY BATH PRODUCTS
- WALK TO SKI SLOPES
- WASHER/DRYER
- WIFI
- SMART TV'S



GUEST MASTER SUITE



BUNK SUITE



MASTER EN-SUITE



MASTER SUITE

Bespoke Bedrooms

Master Suite: King bed, en-suite bathroom and fireplace.

Guest Master Suite: King bed, en-suite bathroom and fireplace.

Guest Suite: King bed and en-suite bathroom.

Guest House Suite: King bed and en-suite bathroom.

Bunk Suite: One set of twin bunk beds.



The Location

Perched high on the hilltop above West Vail and just a short 5-minute drive from the West Vail Cadence ski lift, West Pine Chalet offers it all: mountain proximity and high-altitude privacy. With abundant views of Vail's surrounding foothills, a two-car garage and snowmelt driveway, there's a wonderful West Vail Chalet waiting for you. And Vail and Lionshead Villages are always just a short ride away.

[View Map](#) ▶

